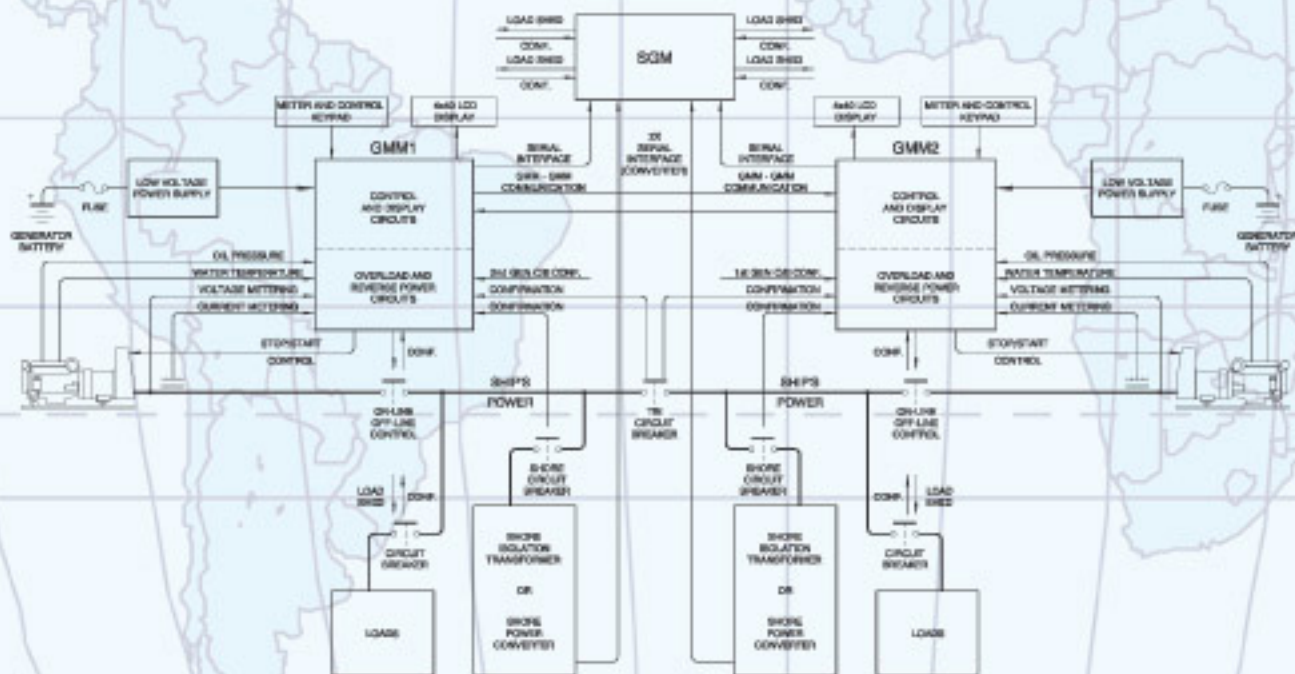


Generator Management Module (GMM)

ASEA Power Systems introduces the next generation of yacht power management with its release of the Generator Management Module (GMM) and Switch Gear Manager (SGM).

GENERATOR MANAGEMENT MODULE

The Generator Management Module (GMM) provides fundamental generator control and metering as well as comprehensive ECU-type (Engine Control Unit) start and control functions for basic generator configurations. Inherent programming and user controllable/programmable features virtually eliminate the need for customized PLC programming for every yacht. ASEA Power Systems' programming resources can provide for further customization in OEM applications.



GENERATOR MANAGEMENT MODULE

Generator Management Module (GMM)

- Push-button Start/Stop and Online/Offline controls with bright visual indicators
- Tie-Breaker (Bars-Breaker) monitoring and control, shore power circuit breaker monitoring – extensive lockout features based on bus-state
- Sealed, waterproof keypad with 160 character LCD display
- Audible alarm and diagnostics
- Reverse Power and Overload detection, programmable in both magnitude and duration
- Synchroscope function supports manual gen to gen transfers, automated seamless transfers and automatic generator cycling
- User configurable settings include over/under voltage and frequency shutdown, overload and reverse power levels, pre-heat, crank repetition, warm-up, cool-down, cycling periods, gen shutdown on fire control commands, etc.
- Data and Event logging utilities include full function power, waveform and trend analysis
- Comprehensive Electrical Metering including Voltage, Amperage, kVA, kW, kW/H, DC Supply Volts, % Load Level
- Generator Mechanical Display – Water Temperature, Oil Pressure, Run-Time, Battery Voltage, and Exhaust Temperature
- Interface to industry standard governors, regulators, and speed controllers (analog or dry contact)
- Supports all common configurations; 1&2 generators, single or split bus, shore power converters, transformer and non-isolated installation
- Interfaces directly with ASEA Power Systems' Switch Gear Manager for extended control functionality
- Intuitive menu driven interface
- Rear-mounted manual push button control of internal Start/Stop/On-Line/Off-Line dry contacts.

ELECTRICAL SPECIFICATIONS

INPUT

- VOLTAGE
- CURRENT

20 - 30V_{DC}
1A_{DC} nominal

OUTPUT

- POWER FORM
- VOLTAGE
- FREQUENCY

Single Phase or Split Phase and Three Phase Delta or Wye
170 - 520VAC (Phase to Phase)
40Hz - 70Hz

CONTROL

- START/STOP
- GENERATOR C/B CONTROL
- TIE BREAKER C/B CONTROL

Form C Dry Contact
Form C Dry Contact
Form C Dry Contact

MECHANICAL SPECIFICATIONS

- HEIGHT
- WIDTH
- DEPTH
- WEIGHT

6.2' (15.7cm)
16.0' (40.6cm)
4.81' (12.2cm)
7.44' (18.9cm)
6.5lbs (2.95kg)

ENVIRONMENTAL

- TEMPERATURE RANGE
- AIR EXCHANGE RATE

0-50 C
10CFM

ASEA Power Systems
7392 Vincent Circle • Huntington Bch, CA 92648 USA
Phone: 714-841-0540 Fax: 714-841-0560
Web: www.aseapower.com

Represented by:

